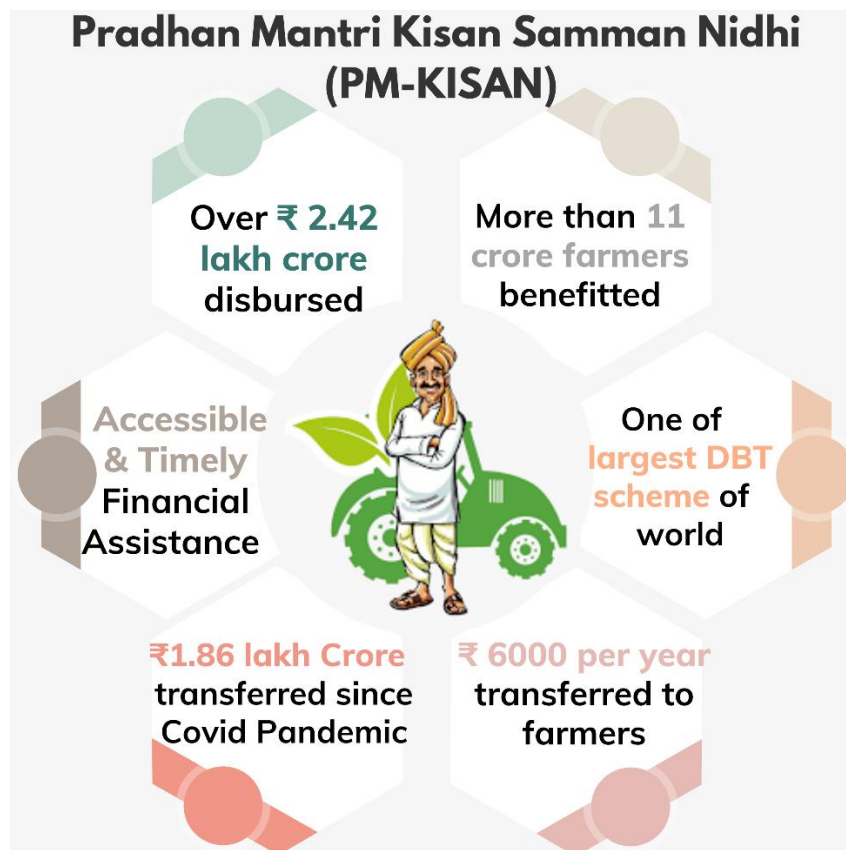


PM-KISAN: Empowering Annadatas by providing Accessible & Timely Financial Assistance

More than Rs. 2.42 Lakh Crore disbursed to Over 11 Crore Farmers

The Pradhan Mantri Kisan Samman Nidhi (PM-KISAN) is a Central Sector scheme with 100% funding from Government of India. Under the scheme, **income support of Rs. 6,000 per year** in three equal installments is provided to all land-holding farmer families, providing them **socio-economic security**. The amount is directly transferred to the bank accounts of the beneficiaries without any involvement of intermediaries, making it **one of the largest Direct Benefit Transfer (DBT) schemes in the world**.

So far, more than **Rs. 2.42 lakh crore** have been disbursed to over **11 crore farmers**. Further, **Rs. 1.86 lakh crore** has been transferred since lockdown due to the Covid-19 pandemic. Notably, over **Rs. 57,628 crore** has been received by more than **3 crore women beneficiaries**, highlighting the scheme's positive impact on empowering women.



As per the [study](#) by **International Food Policy Research Institute (IFPRI)**, PM-KISAN had numerous benefits for the farmers and agriculture sector. It addresses the liquidity constraints of farming households, enabling essential input procurement. The scheme boosts modern cultivar adoption through Krishi Vigyan Kendras. The cash transfer to farmers increases their total net income and enhances their risk-taking capacity, leading to productive investments.

PM-KISAN has empowered the Annadatas (farmers) by boosting agriculture investments, easing credit constraints and spurring rural economic growth. Consequently, farmers have been able to invest in their farms, including purchasing seeds, fertilizers, and necessary equipment, leading to increased agricultural production and improved crop yields.